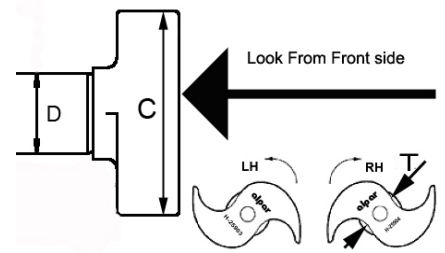
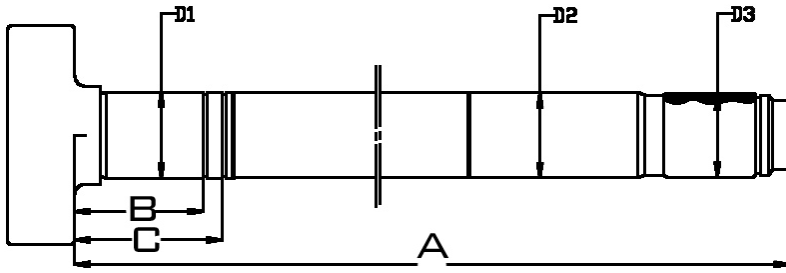


## S-CAM



ALPAR#	REF	APPLICATION	A	D1	D2	D3/Spline
H-25401LH H-25401RH	E-9649 E-9650	16 ½ Q+	8 9/16"	1 ½"	1 ½"	1 ½"-28
H-25402LH H-25402RH	E-9659 E-9660	16 ½ Q+	11 1/18"	1 ½"	1 ½"	1 ½"-28
H-25403LH H-25403RH	E-9661 E-9662	16 ½ Q+	11 1/2"	1 ½"	1 ½"	1 ½"-28
H-25404LH H-25404RH	E-1563 E-1564	Propar 16 ½	16 1/8"	1 5/8"	1 19/32"	1 5/8-37
H-25405LH H-25405RH	E-2441 E-2442	16 ½ Q+	17 5/16"	1 5/8"	1 1/2"	1 ½"-28
H-25406LH H-25406RH	E-2445 E-2446	16 ½ Q+	24 1/16"	1 5/8"	1 1/2"	1 ½"-28
H-25407LH H-25407RH	E-9059 E-9060	16 ½ Q+	23 3/4"	1 5/8"	1 1/2"	1 ½"-28
H-25408LH H-25408RH	E-1424 E-1425	16 ½ Q+	20 3/8"	1 5/8"	1 1/2"	1 ½"-10
H-25409LH H-25409RH	E-5510 E-5511	16 ½ Q+	24 1/16"	1 5/8"	1 1/2"	1 ½"-28
H-25601LH H-25602LH	623 421 0136/236 81.503.010.223/224	MERCEDES / MAN TRUCK FRONT	253 mm	42	42	26 Spline
H-25603LH H-25604LH	81.503.010.225 81.503.010.226	MERCEDES / MAN BUS FRONT	226 mm	42	42	26 Spline
H-25611LH H-25612LH	346 423 1136 346 423 1236	MERCEDES / MAN TRUCK REAR	541 mm	42	42	26 Spline
H-25613LH H-25614LH	81.503.010.271 81.503.010.272	MERCEDES / MAN BUS REAR	525 mm	42	42	26 Spline